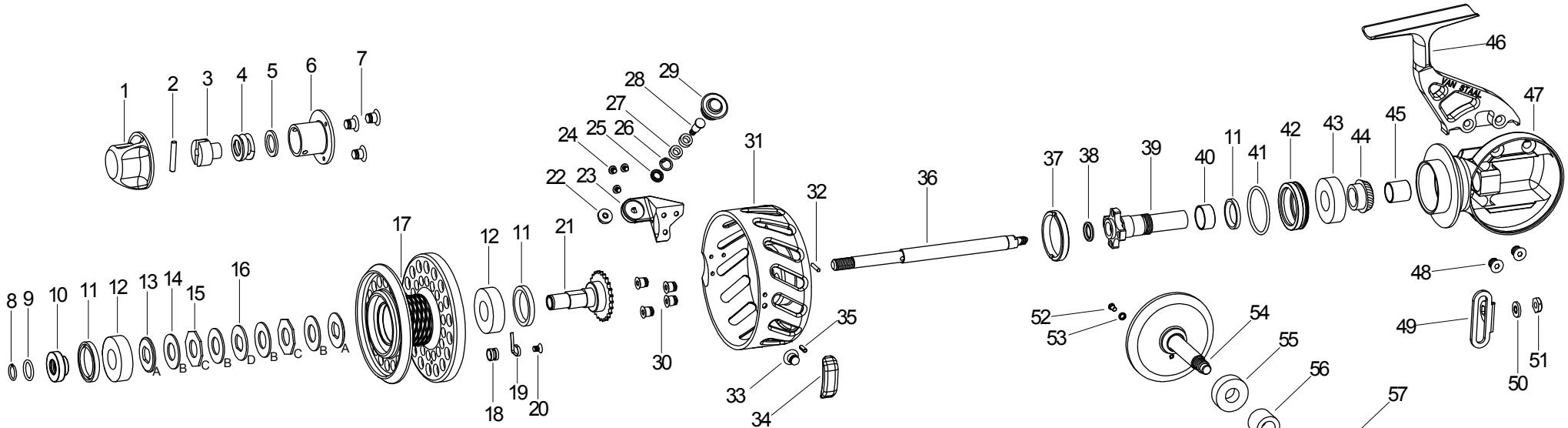


VS200/250/250L Component Diagram



#	Part Name	Part No. (VS200/VS250/VS250L)	#	Part Name	Part No. (VS200/VS250/VS250L)	#	Part Name	Part No. (VS200/VS250/VS250L)
1	DRAG KNOB	SR2006	24	SCREW	SCBH1	47	HOUSING	SR2000/SR2000/SR2000L
2	PIN	PIDW2	25	WASHER SEAL	SR3025	48	HEX SCREW	SCFH5
3	SPRING GUIDE	SR2027	26	RETAINING RING	RR11	49	TRAVERS GUIDE	SR2017
4	SPRING	SR3034	27	RADIAL BEARING	BGRS1	50	LOCK WASHER	WSLCIT1
5	WASHER	SR3090	28	LINE ROLLER SPINDLE	SR3021P	51	HEX NUT	NTHX1
6	INNER SLEEVE	SR2026	29	LINE ROLLER	SR3020	52	SPINDLE	SR2023
7	SCREW, 0-80	SCFH1	30	SCREW	SCFH3	53	ROLLER	SR2022
8	RETAINING RING	SR3041	31	FLYER	SR2001/SR2501/SR2501L	54	MAIN GEAR	SR2009/SR2009/SR2009L
9	O-RING	ORR3	32	ROLL PIN	PIRL2	55	RADIAL BEARING	BGR02
10	RETAINER	VSB2024P	33	SCREW	SCFH1	56	CLUTCH BEARING	BGRC1
11	OIL SEAL	OSPR3	34	COUNTERWEIGHT	SR2076P/SR2576P/SR2576P	57	O-RING	ORR5
12	RADIAL BEARING	BGRS3	35	ROLL PIN	PIRL1	58	COVER	SR2002/SR2002/SR2002L
13	BASE DRAG WASHER	SR3036	36	SHAFT	SR2010	59	NEEDLE BEARING	BGND1
14	DRAG WASHER	SR3038	37	LOCK RING	SR2056P	60	OIL SEAL	OSPR2
15	OCT. DRAG WASHER	SR3039	38	QUAD-SEAL	ORQ2	61	HANDLE HUB	SR3014/SR3014/SR3014L
16	SLOTTED DRAG WASHER	SR3037	39	SLEEVE GUIDE	SR2013/SR2013/SR2013L	62	HANDLE SCREW	SCSHC9
17	SPOOL	SR2003/SR2503/SR2503	40	SLEEVE	SR2014	63	HANDLE ARM	SR2005
18	CLICKER BASE	SR1057P	41	O-RING	ORR6	64	KNOB BOLT NUT	SR3031P
19	CLICKER	SR1058P	42	SEAL CARRIER	SR2039	65	HANDLE WASHER	SR2078
20	SCREW, 4-40	SCFH2	43	RADIAL BEARING	BGRS3	66	FLANGED BUSHING	SR3030
21	SPOOL HUB	VSB2040P	44	PINION	SR2011/SR2011/SR2011L	67	CRANK KNOB	SR2008
22	SPINDLE NUT	SR3028P	45	BUSHING	SR2077	68	BUSHING	SR3029
23	LINE ROLLER BRACKET	SR2019/SR2519/SR2519L	46	FOOT	SR2004/SR2004/SR2004L	69	SHOULDER SCREW	SR2020P

